

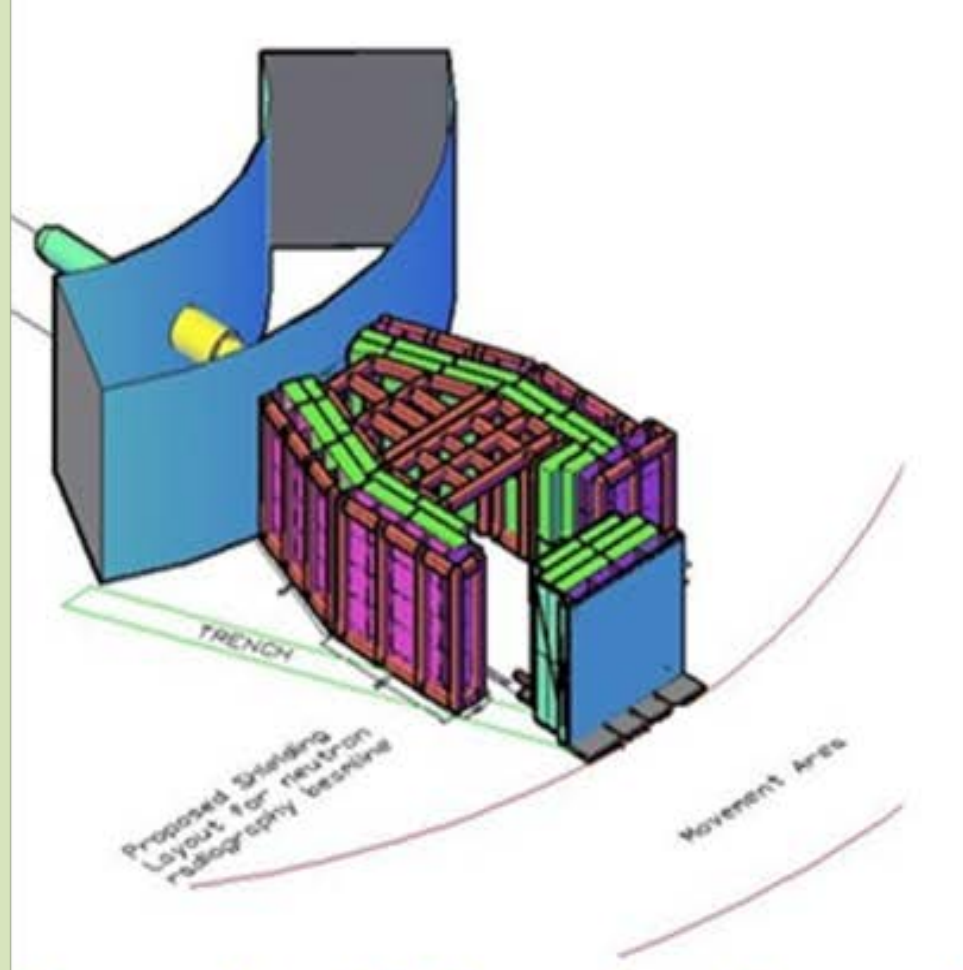


Study of Reactor Structural Materials at Neutron Imaging Beam Line, Dhruva, India



Shefali Shukla*, Yogesh Kashyap, Tushar Roy, Mayank Shukla and S.C.Gadkari
*shefali@barc.gov.in

Beam line at Dhruva



Schematic of Imaging beamline



Neutron Imaging Beamline HS-3018



Shielded hutch door



Experimental hutch

Imaging Techniques Implemented

- Neutron Radiography & Tomography
- Neutron Phase Contrast Imaging
- Real time imaging for transient events

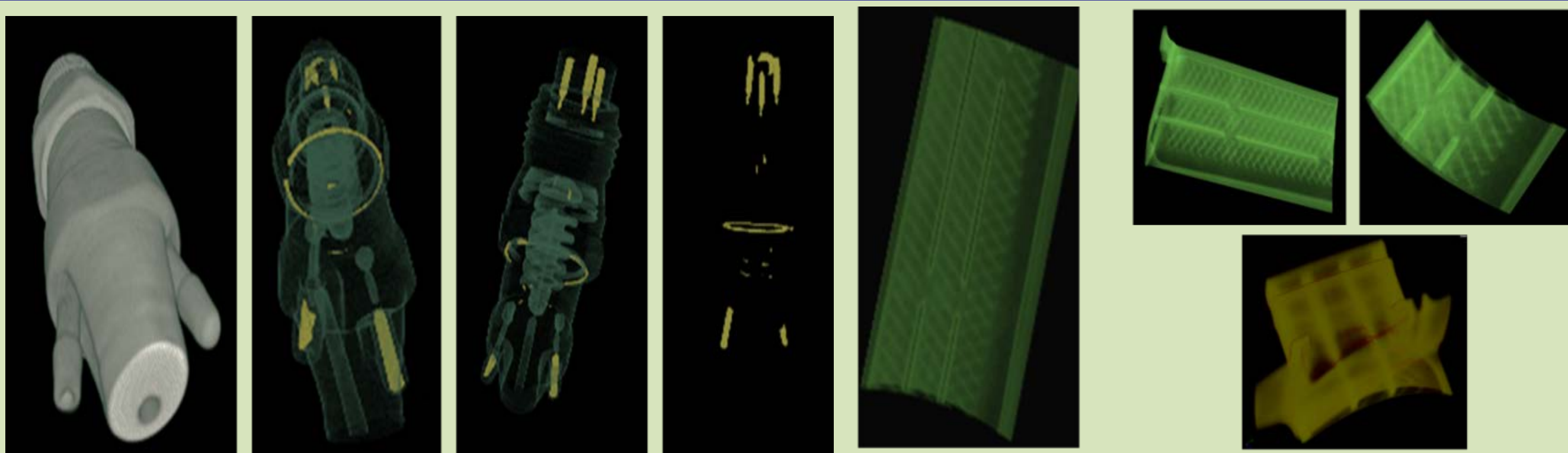
Future Plans

- Neutron Bragg Edge Imaging
- Neutron Laminography

Beam Characteristics

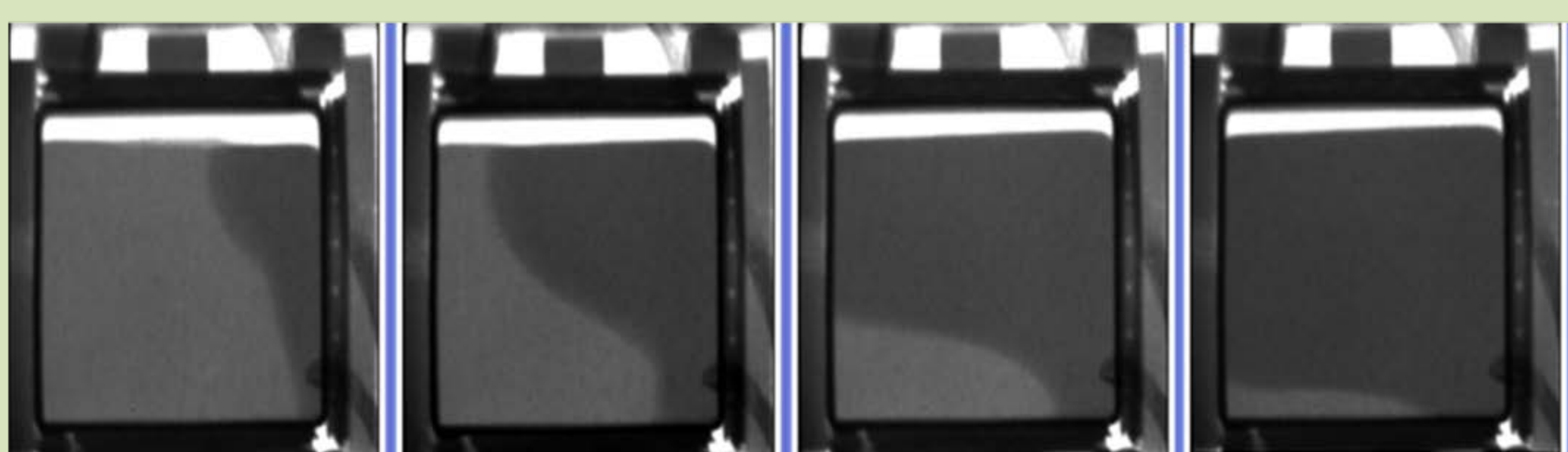
Beam parameter	Value
Thermal Neutron Flux	4×10^7 n/cm ² /sec
L/d (Collimation ratio)	160
Cadmium Ratio	250
Beam Diameter	120 mm

Neutron Tomography for Material Science Applications



Tomography of fuel injector of automobile Tomography of turbine blade

Real Time Imaging of Lead Melting

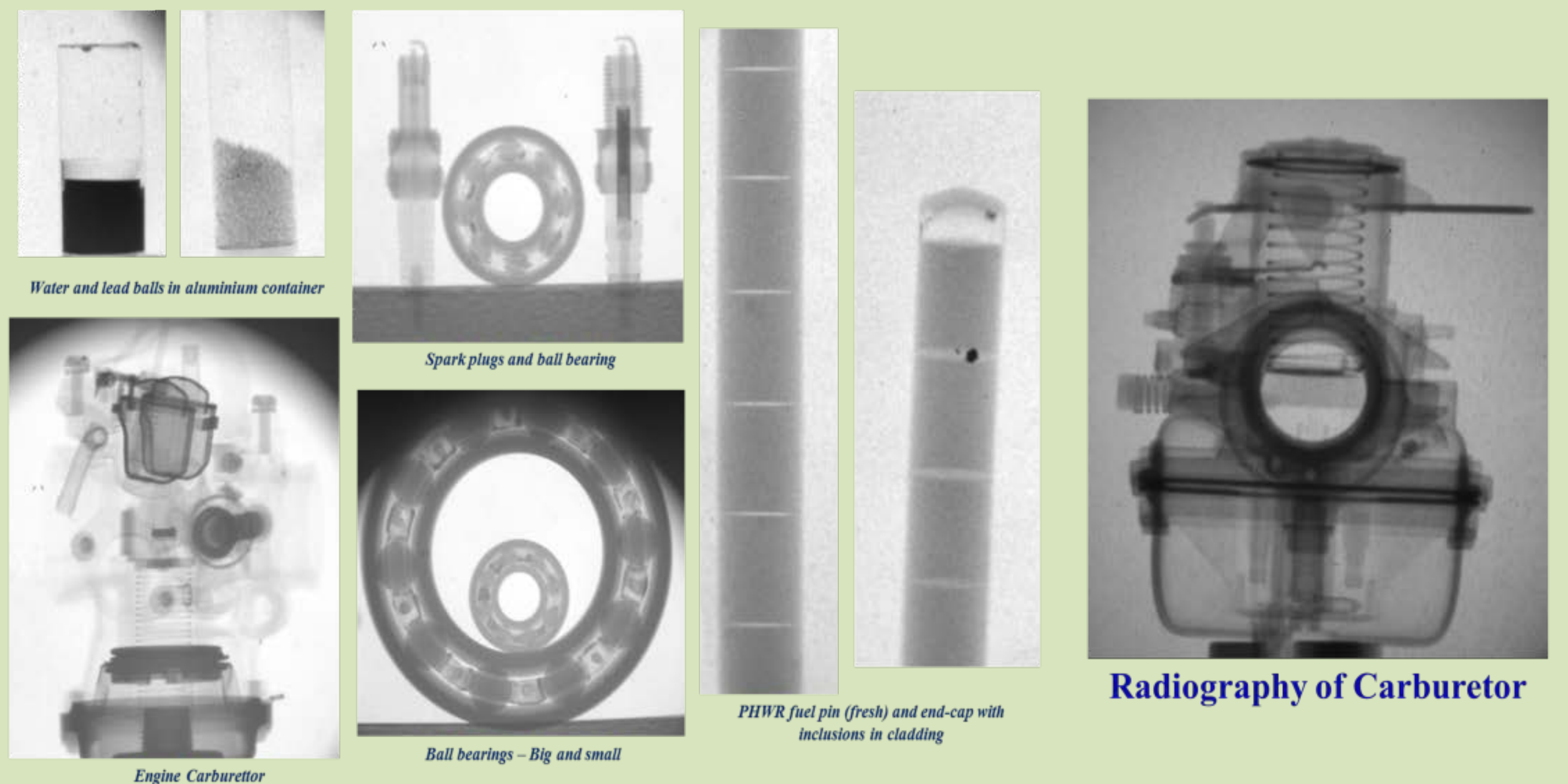


Advanced Imaging Collimator

- Sapphire single crystal as fast neutron filter
- Bismuth single crystal as neutron filter ($\lambda < 0.4$ nm) and for gamma absorption
- Dual collimator for absorption and phase contrast imaging
- High cadmium ratio pre-dominantly thermal neutron beam

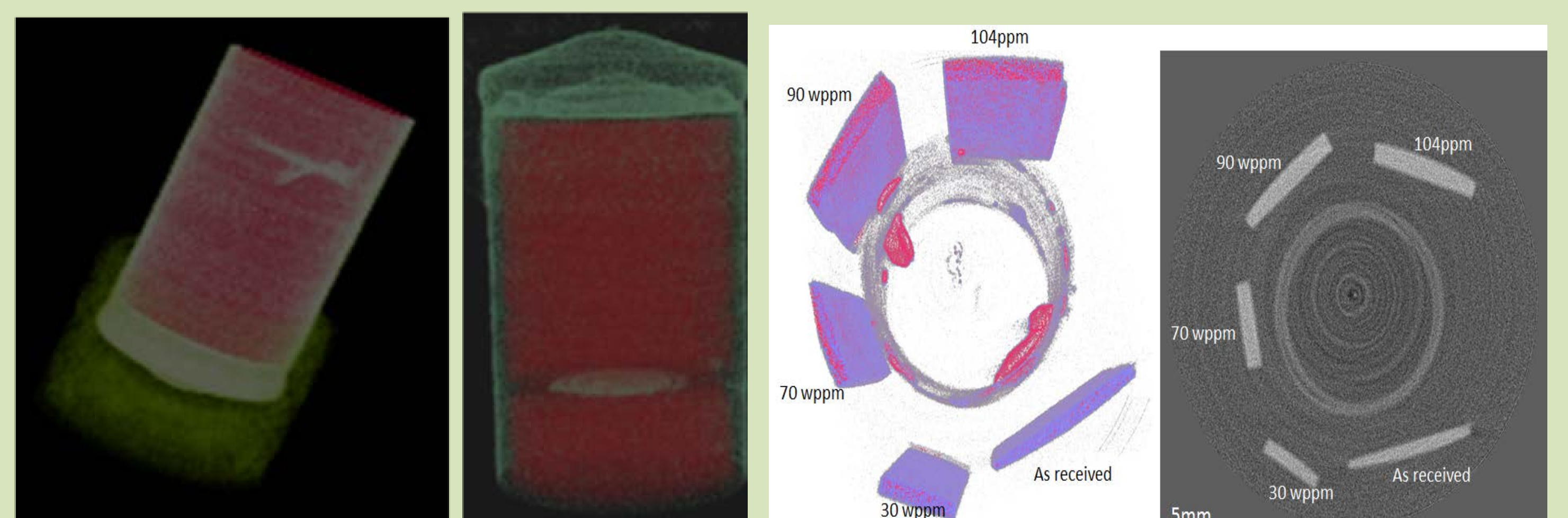


Neutron Radiography for different applications



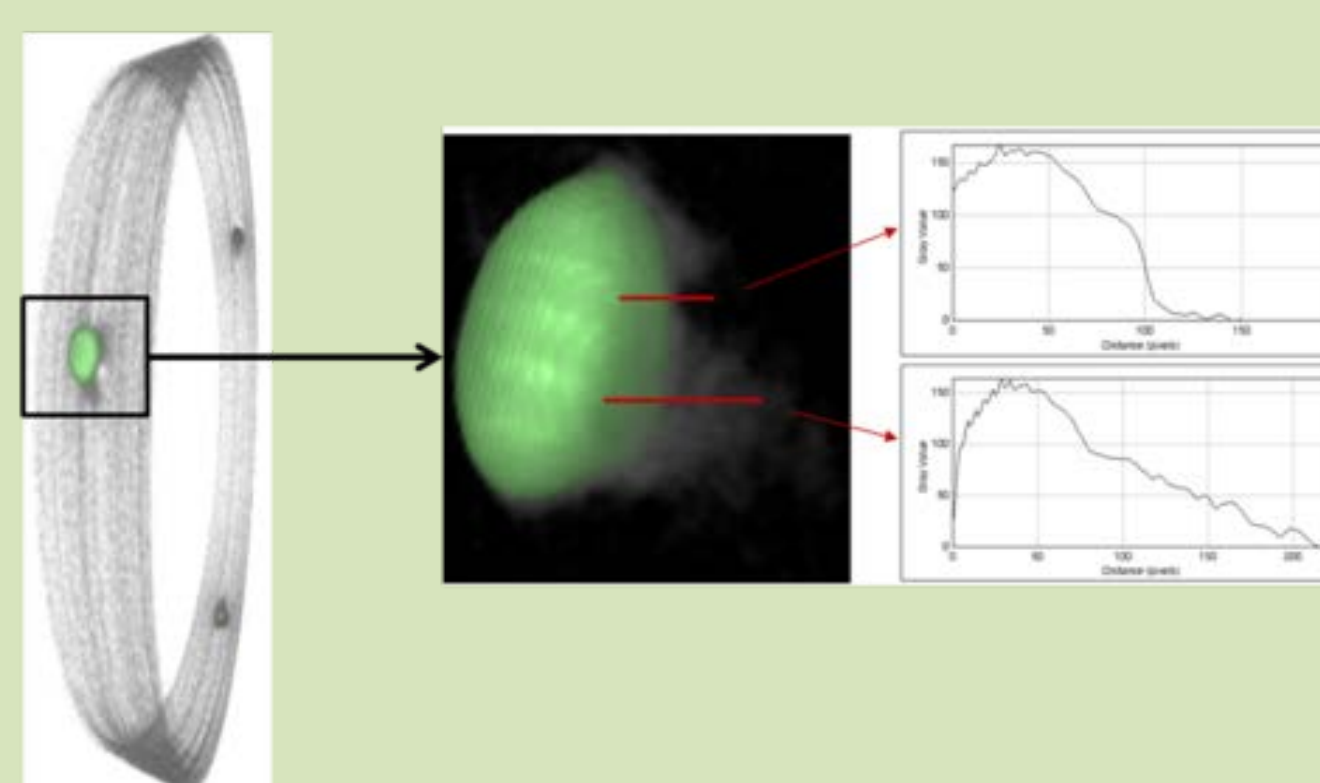
Radiography of Carburetor

Neutron Tomography for Reactor Applications

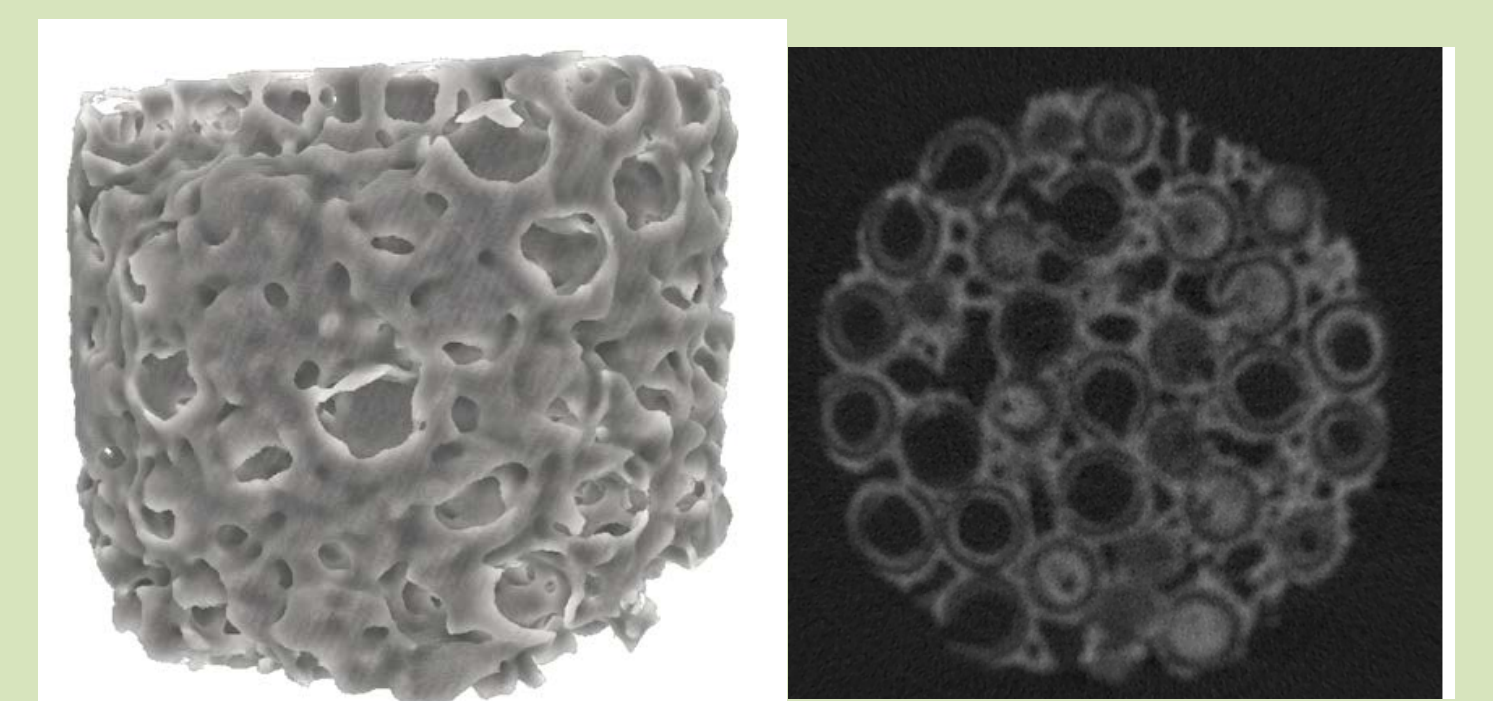


3D tomography of PHWR fuel rod and end cap showing a crack

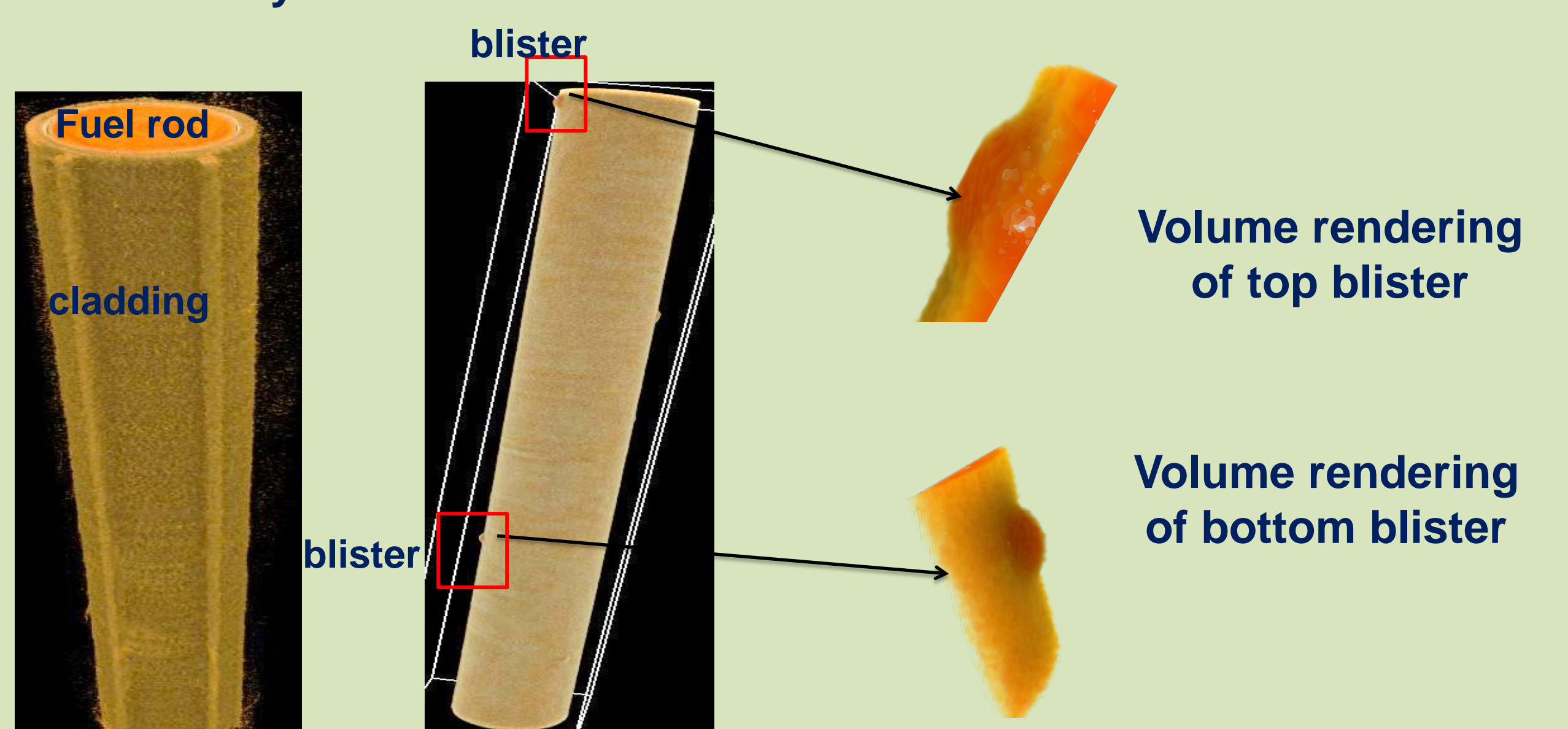
Tomography reconstruction of hydrogen charged Zr-alloy coupons



3D tomography hydride blister in Zircaloy Tube



3D tomography of aluminum foam



Volume rendering of top blister

Volume rendering of bottom blister